

# Christmas Tunes

for

Flute



Jingle Bells  
 I Saw Mommy Kissing Santa Claus  
 Winter Wonderland  
 Santa Claus Is Coming To Town  
 Let It Snow  
 Have Yourself A Merry Little Christmas  
 Rudolph The Red-Nosed Reindeer  
 Sleigh Ride  
 Silent Night  
 The Christmas Song  
 White Christmas  
 Away In A Manger  
 Ding Dong Merrily On High  
 The First Nowel  
 God Rest Ye Merry Gentlemen  
 Good King Wenceslas  
 Hark The Herald Angels Sing  
 O Tannenbaum (O Christmas Tree)  
 O Come All Ye Faithful  
 O Holy Night  
 The Snowman  
 We Three Kings  
 O Little Town Of Bethlehem  
 Frosty The Snowman  
 We Wish You A Merry Christmas  
 Once In Royal David's City  
 Joy To The World  
 Silver Bells  
 Santa Baby  
 Christmas Time Is Here  
 It's Beginning To look Like Christmas  
 A Child Is Born  
 When A Child Is Born  
 Jingle Bell Rock  
 It's The Most Wonderful Time Of The Year  
 In The Bleak Midwinter

## Jingle Bells



## I Saw Mommy Kissing Santa Claus

Musical score for 'I Saw Mommy Kissing Santa Claus' in 4/4 time, key of B-flat major. The score consists of five staves of music. The first staff begins with a treble clef, a key signature of one flat (B-flat), and a 4/4 time signature. The melody is written on a single staff with various note values including quarter, eighth, and sixteenth notes, as well as rests and ties.

## Winter Wonderland

Musical score for 'Winter Wonderland' in 4/4 time, key of B-flat major. The score consists of four staves of music. The first staff begins with a treble clef, a key signature of one flat (B-flat), and a 4/4 time signature. The melody is written on a single staff with various note values including quarter, eighth, and sixteenth notes, as well as rests and ties. The second staff includes first and second endings, marked '1.' and '2.' respectively.

## Santa Claus Is Coming To Town

Musical score for 'Santa Claus Is Coming To Town' in 4/4 time, key of B-flat major. The score consists of four staves of music. The first staff begins with a repeat sign and a first ending bracket. The second staff has a second ending bracket. The third and fourth staves continue the melody.

## Let It Snow!

Musical score for 'Let It Snow!' in 4/4 time, key of B-flat major. The score consists of four staves of music. The first staff begins with a repeat sign. The second staff has two first ending brackets. The third and fourth staves continue the melody.

# Have Yourself A Merry Little Christmas

Musical score for 'Have Yourself A Merry Little Christmas' in B-flat major, 4/4 time. The score consists of six staves of music. The melody is primarily in the treble clef, with some accompaniment in the bass clef. The piece features a mix of eighth and sixteenth notes, with some rests and a final double bar line.

# Rudolph The Red-Nosed Reindeer

Musical score for 'Rudolph The Red-Nosed Reindeer' in B-flat major, 4/4 time. The score consists of four staves of music. The melody is primarily in the treble clef, with some accompaniment in the bass clef. The piece features a mix of eighth and sixteenth notes, with some rests and a final double bar line. There are first and second endings indicated by bracketed lines and numbers 1 and 2.



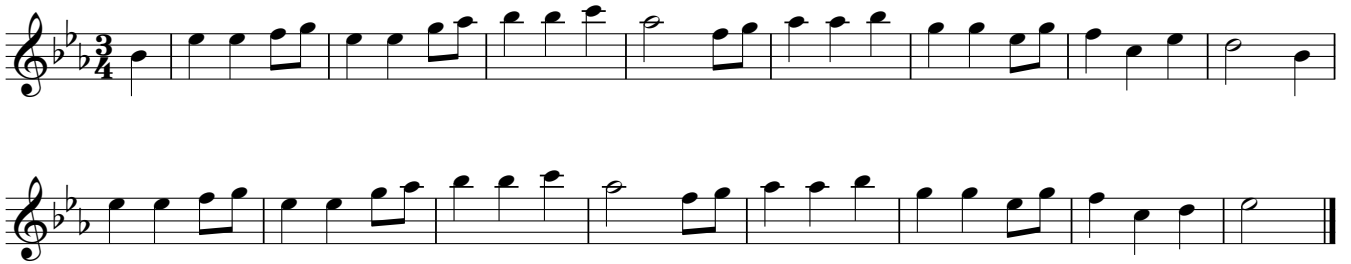
# The Christmas Song

Musical score for 'The Christmas Song' in G major, 4/4 time. The score consists of six staves of music. The first staff begins with a treble clef, a key signature of one flat (F major), and a 4/4 time signature. The melody features eighth and sixteenth notes, with a triplet of eighth notes in the final measure. The second staff continues the melody with similar rhythmic patterns. The third staff includes a triplet of eighth notes and a measure with a fermata. The fourth staff features a triplet of eighth notes and a measure with a fermata. The fifth staff continues the melody. The sixth staff concludes the piece with a triplet of eighth notes and a final measure with a fermata.

# White Christmas

Musical score for 'White Christmas' in G major, 4/4 time. The score consists of four staves of music. The first staff begins with a treble clef, a key signature of one flat (F major), and a 4/4 time signature. The melody is primarily composed of quarter and eighth notes. The second staff continues the melody. The third staff features a measure with a fermata. The fourth staff concludes the piece with a measure containing a fermata.

## Away In A Manger



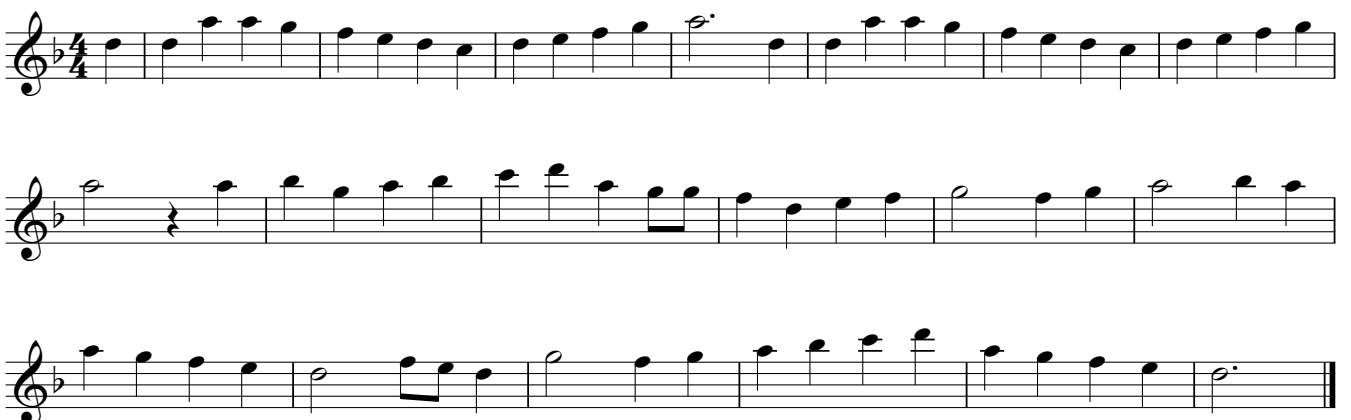
## Ding Dong Merrily On High



## The First Nowell



## God Rest You Merry Gentlemen





## Good King Wenceslas

Musical score for 'Good King Wenceslas' in 4/4 time, key of B-flat major. The score consists of three staves of music. The first staff begins with a treble clef and a key signature of one flat. The melody is composed of quarter and eighth notes, with some rests. The second and third staves continue the melody with similar rhythmic patterns and note values.

## Hark The Herald Angels Sing

Musical score for 'Hark The Herald Angels Sing' in 4/4 time, key of B-flat major. The score consists of three staves of music. The first staff begins with a treble clef and a key signature of one flat. The melody features a mix of quarter, eighth, and sixteenth notes, with some rests. The second and third staves continue the melody with similar rhythmic patterns and note values.

## O Tannenbaum (O Christmas Tree)

Musical score for 'O Tannenbaum (O Christmas Tree)' in 3/4 time, key of B-flat major. The score consists of three staves of music. The first staff begins with a treble clef and a key signature of one flat. The melody is composed of quarter and eighth notes, with some rests. The second and third staves continue the melody with similar rhythmic patterns and note values.

## O Come All Ye Faithful

Musical score for 'O Come All Ye Faithful' in G major, 4/4 time. The score consists of three staves of music. The first staff features a melodic line with quarter and half notes. The second staff provides harmonic accompaniment with chords and moving lines. The third staff continues the accompaniment, ending with a double bar line.

## O Holy Night

Musical score for 'O Holy Night' in D minor, 12/8 time. The score consists of six staves of music. The first staff begins with a melodic line in 12/8 time. The second staff continues the melody with a variety of note values including eighth and sixteenth notes. The third, fourth, and fifth staves provide a rich harmonic accompaniment using chords and sustained notes. The sixth staff concludes the piece with a final melodic flourish.

### The Snowman

The musical score for 'The Snowman' is written in 4/4 time with a key signature of one flat (Bb). It consists of six staves of music. The first staff begins with a repeat sign and contains a melodic line with eighth-note runs and slurs. The second staff continues the melody with similar rhythmic patterns. The third and fourth staves feature first and second endings, indicated by '1.' and '2.' above the notes. The fifth staff shows a change in tempo and meter to 2/4 and then 4/4, with a key signature change to one sharp (F#). The sixth staff concludes the piece with a final melodic phrase.

### We Three Kings

The musical score for 'We Three Kings' is written in 3/4 time with a key signature of one flat (Bb). It consists of four staves of music. The first staff begins with a melodic line of quarter and eighth notes. The second and third staves continue the melody with a steady rhythmic pattern. The fourth staff concludes the piece with a final melodic phrase.

### O Little Town Of Bethlehem

Musical notation for the song 'O Little Town Of Bethlehem'. It consists of three staves of music in 4/4 time, written in a key with two flats (B-flat and E-flat). The melody is simple and characteristic of the traditional hymn.

### Frosty The Snowman

Musical notation for the song 'Frosty The Snowman'. It consists of six staves of music in 4/4 time, written in a key with two flats (B-flat and E-flat). The melody is simple and characteristic of the traditional children's song.

### We Wish You A Merry Christmas

Musical notation for 'We Wish You A Merry Christmas' in 3/4 time, key of B-flat major. The score consists of three staves of music. The first staff begins with a repeat sign. The melody is written in treble clef with a key signature of two flats.

### Once In Royal David's City

Musical notation for 'Once In Royal David's City' in 4/4 time, key of B-flat major. The score consists of two staves of music. The melody is written in treble clef with a key signature of two flats.

### Joy To The World

Musical notation for 'Joy To The World' in 2/4 time, key of B-flat major. The score consists of four staves of music. The melody is written in treble clef with a key signature of two flats.

# Silver Bells



Musical score for 'Silver Bells' in 3/4 time, key of B-flat major. The score consists of four staves of music. The first staff begins with a treble clef, a key signature of two flats (B-flat major), and a 3/4 time signature. The melody is written in a simple, flowing style with eighth and quarter notes, and some rests. The second and third staves continue the melody with some phrasing slurs. The fourth staff concludes the piece with a double bar line.

# Santa Baby



Musical score for 'Santa Baby' in 4/4 time, key of B-flat major. The score consists of five staves of music. The first staff begins with a treble clef, a key signature of two flats (B-flat major), and a 4/4 time signature. The melody is written in a simple, flowing style with eighth and quarter notes, and some rests. The second staff includes a first ending bracket labeled '1.' and a second ending bracket labeled '2.'. The third and fourth staves continue the melody with some phrasing slurs. The fifth staff concludes the piece with a double bar line.

# Christmas Time Is Here

Musical score for 'Christmas Time Is Here' in 3/4 time, key of B-flat major. The score consists of three staves. The first staff contains the main melody with a repeat sign at the end. The second and third staves provide harmonic accompaniment.

# It's Beginning To Look Like Christmas

Musical score for 'It's Beginning To Look Like Christmas' in 4/4 time, key of B-flat major. The score consists of six staves. The first staff begins with a triplet. The second and third staves continue the melody and accompaniment. The fourth staff includes the word 'Fine' above the staff. The fifth and sixth staves feature more triplets and end with the instruction 'D.C. al Fine'.

# A Child Is Born

Musical score for 'A Child Is Born' in 3/4 time, key of B-flat major. The score consists of three staves. The first staff contains the main melody. The second and third staves provide harmonic accompaniment, with the third staff featuring a series of slurs over the final measures.

# When A Child Is Born

Musical score for 'When A Child Is Born' in 4/4 time, key of B-flat major. The score consists of three staves of music. The first staff begins with a treble clef, a key signature of two flats (B-flat major), and a 4/4 time signature. The melody is written in a simple, accessible style with various note values including quarter, eighth, and sixteenth notes, as well as rests and slurs. The second and third staves continue the melody, ending with a double bar line.

# Jingle Bell Rock

Musical score for 'Jingle Bell Rock' in 4/4 time, key of B-flat major. The score consists of seven staves of music. The first staff begins with a treble clef, a key signature of two flats (B-flat major), and a 4/4 time signature. The melody is characterized by a rhythmic pattern of eighth and sixteenth notes, typical of the 'Jingle Bell' sound. The score includes various musical notations such as slurs, ties, and rests. The piece concludes with a double bar line on the seventh staff.



# It's The Most Wonderful Time Of The Year

Musical score for 'It's The Most Wonderful Time Of The Year' in 3/4 time, B-flat major. The score consists of seven staves of music. The first staff begins with a repeat sign. The second staff has a first ending bracket labeled '1.'. The third staff has a second ending bracket labeled '2.'. The key signature has two flats (B-flat and E-flat), and the time signature is 3/4. The melody features various note values including quarter, eighth, and half notes, with some notes beamed together and some having slurs or accents.

# In The Bleak Midwinter

Musical score for 'In The Bleak Midwinter' in 4/4 time, B-flat major. The score consists of three staves of music. The key signature has two flats (B-flat and E-flat), and the time signature is 4/4. The melody is characterized by dotted rhythms and eighth-note patterns, with some notes beamed together and some having slurs.