

Christmas Tunes

for

Alto Saxophone



Jingle Bells
 I Saw Mommy Kissing Santa Claus
 Winter Wonderland
 Santa Claus Is Coming To Town
 Let It Snow
 Have Yourself A Merry Little Christmas
 Rudolph The Red-Nosed Reindeer
 Sleigh Ride
 Silent Night
 The Christmas Song
 White Christmas
 Away In A Manger
 Ding Dong Merrily On High
 The First Nowel
 God Rest Ye Merry Gentlemen
 Good King Wenceslas
 Hark The Herald Angels Sing
 O Tannenbaum (O Christmas Tree)
 O Come All Ye Faithful
 O Holy Night
 The Snowman
 We Three Kings
 O Little Town Of Bethlehem
 Frosty The Snowman
 We Wish You A Merry Christmas
 Once In Royal David's City
 Joy To The World
 Silver Bells
 Santa Baby
 Christmas Time Is Here
 It's Beginning To look Like Christmas
 A Child Is Born
 When A Child Is Born
 Jingle Bell Rock
 It's The Most Wonderful Time Of The Year
 In The Bleak Midwinter

Jingle Bells



I Saw Mommy Kissing Santa Claus



Santa Claus Is Coming To Town

Musical score for 'Santa Claus Is Coming To Town' in 4/4 time, key of D major. The score consists of four staves. The first staff begins with a repeat sign and a first ending bracket. The second staff has a second ending bracket. The third and fourth staves continue the melody. The piece concludes with a double bar line.

Let It Snow!

Musical score for 'Let It Snow!' in 4/4 time, key of D major. The score consists of four staves. The first staff begins with a repeat sign. The second staff has first and second ending brackets. The third and fourth staves continue the melody. The piece concludes with a double bar line.

Have Yourself A Merry Little Christmas



Rudolph The Red-Nosed Reindeer



Sleigh Ride



Musical score for "Sleigh Ride" in G major (one sharp) and 4/4 time. The score consists of five staves of music. The first staff contains the first measure of the melody. The second staff contains the second measure, which includes a first ending bracket and a second ending bracket. The third staff contains the third measure. The fourth staff contains the fourth measure. The fifth staff contains the fifth measure, which includes a first ending bracket and a second ending bracket.

Silent Night



Musical score for "Silent Night" in G major (one sharp) and 3/4 time. The score consists of three staves of music. The first staff contains the first measure of the melody. The second staff contains the second measure. The third staff contains the third measure, which includes a first ending bracket and a second ending bracket.

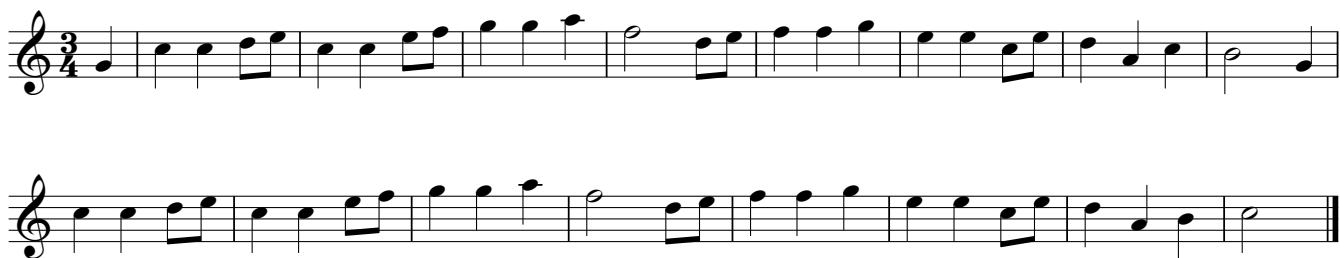
The Christmas Song



White Christmas



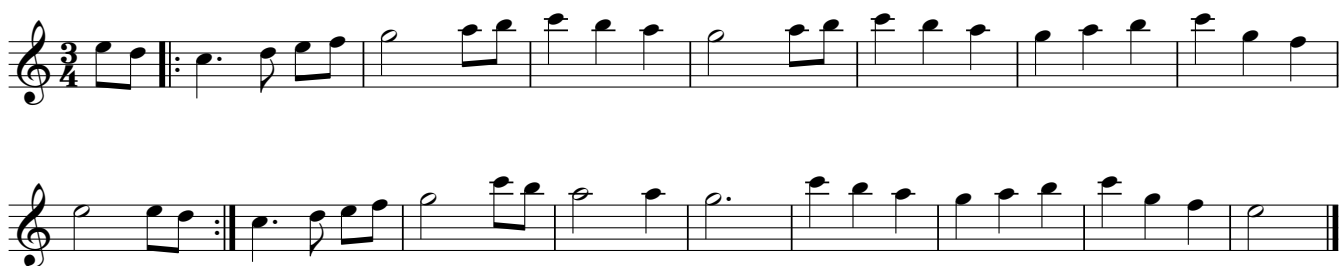
Away In A Manger



Ding Dong Merrily On High



The First Nowell



God Rest You Merry Gentlemen



Good King Wenceslas



Hark The Herald Angels Sing



O Tannenbaum (O Christmas Tree)



O Come All Ye Faithful



O Holy Night



The Snowman

Musical score for "The Snowman" in G major, 4/4 time. The score consists of six staves. The first five staves contain the main melody with various ornaments and repeat signs. The sixth staff is a double bar line. The key signature has two sharps (F# and C#).

We Three Kings

Musical score for "We Three Kings" in G major, 3/4 time. The score consists of four staves. The first three staves contain the main melody. The fourth staff is a double bar line. The key signature has two sharps (F# and C#).

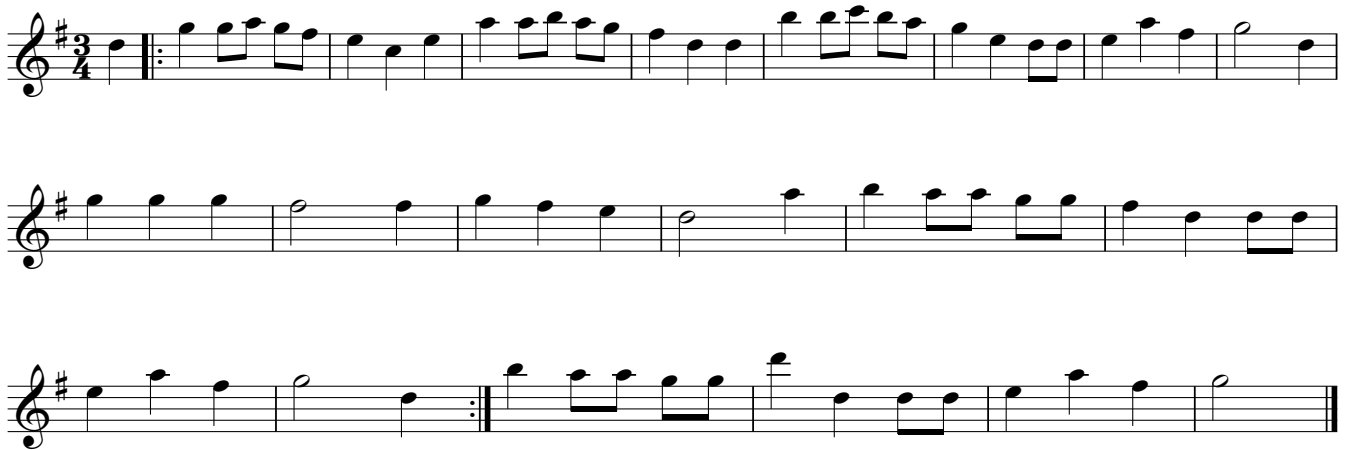
O Little Town Of Bethlehem



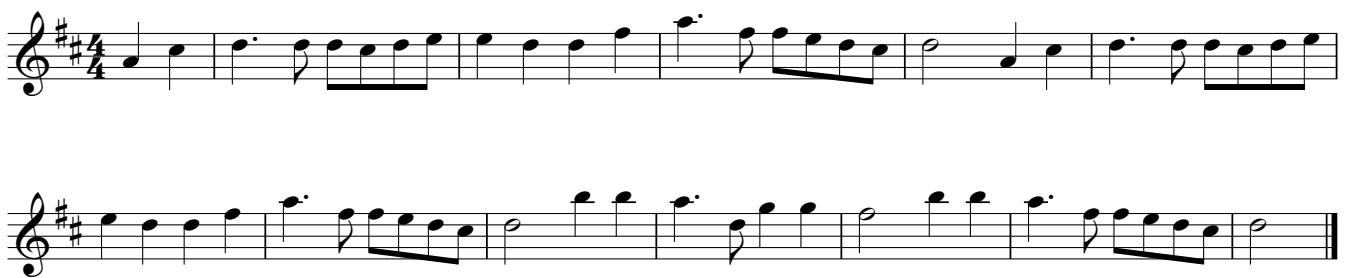
Frosty The Snowman



We Wish You A Merry Christmas



Once In Royal David's City



Joy To The World



Silver Bells

13



Santa Baby



Christmas Time Is Here



It's Beginning To Look Like Christmas



A Child Is Born



When A Child Is Born

15



Jingle Bell Rock



It's The Most Wonderful Time Of The Year

Musical score for "It's The Most Wonderful Time Of The Year" in 3/4 time, key of D major. The score consists of seven staves of music. The first staff begins with a treble clef, a key signature of one sharp (F#), and a 3/4 time signature. The melody is written in a single line. The second staff continues the melody, featuring a first ending bracket over the final two measures. The third staff begins with a second ending bracket over the first two measures, followed by a repeat sign. The fourth staff continues the melody. The fifth staff continues the melody. The sixth staff continues the melody. The seventh staff concludes the piece with a double bar line.

In The Bleak Midwinter

Musical score for "In The Bleak Midwinter" in 4/4 time, key of D major. The score consists of three staves of music. The first staff begins with a treble clef, a key signature of two sharps (F# and C#), and a 4/4 time signature. The melody is written in a single line. The second staff continues the melody. The third staff concludes the piece with a double bar line.